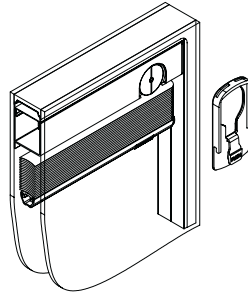


TOP

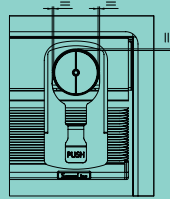
Caution!

Although the system is equipped with an automatic release device, keep children away from the blind loop cord operating mechanism.



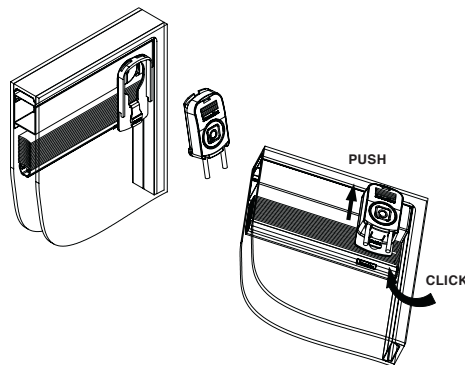
Application of external magnetic device

- 1** Clear the area where the magnet is to be positioned from possible traces of silicone, dust or dirt.

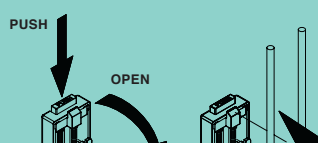


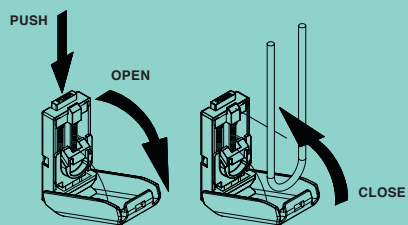
- 2** Stick the self-centring base plate to the glass surface such that the cut-out in the base is perfectly aligned with the internal magnet. **CAUTION!**

Do not use any other kind of glue or silicon instead of the double-sided adhesive tape provided. Fit the double glazing unit into the frame so that the self-centring base plate does not conflict with the glazing bead or with the gasket, if any.



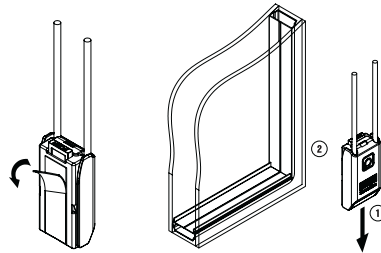
- 3** Slide the magnetic housing unit into the self-centring base plate, pushing the former upwards until it is correctly locked, as confirmed by the click of the "Push" button.



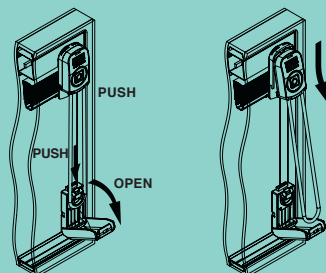


Application of cord tensioner

- 4** Thoroughly clean the area where the cord tensioner will be applied.
- 5** Open the cord tensioner by pressing the “Push” button located at the top; position the cord over the tensioner slide, ensuring the cord is not twisted and the spring is not under tension. Close the cover plate.

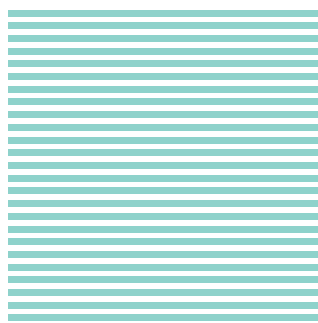


- 6** Remove the protective film from the cord tensioner, and with the cord under slight tension stick the cord tensioner to the glass. **CAUTION!** When adjusting the blind, please move the cord only parallel to the glass.



Removal of external magnetic device from glass

- 7** Remove the cover plate from the cord tensioner by pressing the “Push” button and release the cord; press the “Push” button of the magnetic housing unit and remove it.



ScreenLine®

www.pellini.net